



Flat Pack Garden Store

instructions and accessories



CONTENTS

1. Flat Pack Garden Store – Assembly Instructions
2. Shelving – Assembly Instructions

1 Flat Pack Garden Store

ASSEMBLY INSTRUCTIONS

For assembling Flat Pack Garden Store

Web Quick Find (QF Code): 460

Tools



Tools and equipment you will need:

- PZ2 screwdriver
- Flat head screwdriver
- 13mm spanner and socket set
- 19mm spanner and socket set
- Spirit level
- Five tread stepladder (minimum)
- Work gloves (to protect your hands from sharp edges and to assist grip when lifting the metal panels)
- Please refer to the Risk Assessment 'Erection of Flat Pack Stores'.
- A minimum of two people are needed to assemble the store.

Hardware parts



Delivery and unpacking

1.11 The garden store will arrive in flat pack form. If the crane can offload and level up in the final erection position, this will save you time later.



Assembly hints

1.1 Try to get the pack delivered as close as possible to the erection area. If it arrives on one of our HIAB lorries, please let the driver know and they will help by levelling it up with you. To ensure the chassis is level, it's best to use each of the four corners and once level support the base in the middle to help prevent any sag over time.

1.2 Ideally concrete bases are the best option for long-term installations although paving slabs can provide the simplest solution. Plywood packing is ideal for small adjustments or short/medium-term installations.

1.3 The erection process is made much easier when the chassis is level at the start.

1.4 Don't assemble in windy conditions as this can be dangerous and make sure you have enough people available to move and erect the panels safely.

1.12 Whether or not you need to move the parts to a different location, the store now needs to be unpacked. Unbolt the four metal retaining plates using a 19mm spanner and also unscrew the lifting eyes. The retaining plates are not required for assembly, so dispose or keep if you intend to re-pack the unit at a later date.



Maintenance

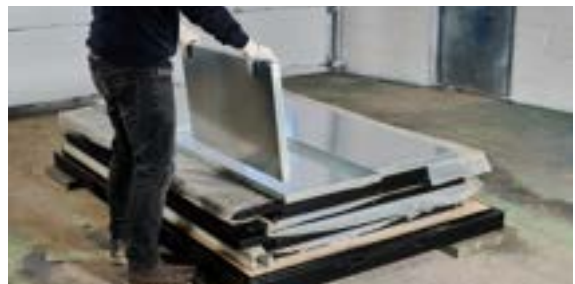
1.5 Check foundations periodically to make sure that the unit remains level. Signs that the unit might have moved usually result in the door becoming difficult to open or close, or the unit rocking on the pads.

1.6 The only moving parts are the lock and hinges which need a light oiling on a periodic basis.

1.7 Check the roof from time to time and remove any debris, especially leaves, to ensure the gutters work correctly.

1.8 We advise applying a protective layer of paint immediately if a flat pack gets scratched to prevent rusting.

1.13 Now lift off the top roof panel and all other items. Lay them out neatly so you can easily locate the parts later. Please do not attempt this in windy or gusty conditions as individual parts could be blown away, endangering you and others.



Other information

1.8 If you keep all the packaging material, it can be used to re-pack the unit at a later date. Otherwise please recycle it.

1.9 The unit is not designed to be stacked.

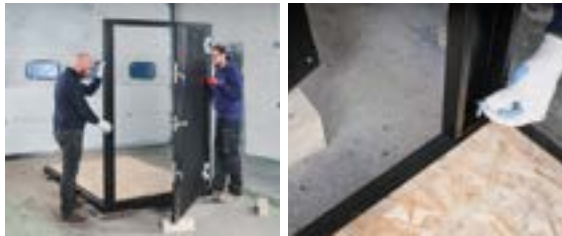
1.10 The unit once correctly assembled, can be lifted and moved using the lifting hooks. Please check the security of all fixings each time before lifting.

1.14 If you need to move the parts to a new location, do so now. Begin with the base which needs to be level (check with the spirit level), before starting the erection process.

Erection of the Flat Pack Garden Store



1.15 Fit handle to the door panel, slide the barrels into the door and turn. Once the lock turns, this shows it is located correctly and the screw can be inserted and tightened using your PZ2 screwdriver.



1.16 Position the door panel on the end required.
1.17 Using a 13mm socket now fit 4x M8 bolts and washers to secure the door panel to the chassis.



1.18 Now unlock the door and prop it open using the wooden packaging that you removed earlier. If you are erecting on an exposed site, you may need others to hold the door panel to prevent it falling and causing damage.

1.19 Now lift either wall panel (if the site is restricted we recommend you start with the wall nearest any obstruction) to the side of the chassis base. The tongue on the side panel will slide into a groove on the door panel. Once aligned correctly, fix the wall panel to the door panel using an M8 bolt with washer each side.

1.20 Now fix the side panel to the chassis using 3x M10 and 2x M8 bolts and washers.
1.21 Repeat steps 1.19 - 1.20 for the other side panel.



1.22 Now fit the end panel (panel opposite the door). Rest on the bottom of the chassis rail at 45 degrees and raise up, aligning the tongue and groove joints as you lift. Do not force this as it could damage the tongue, making it difficult to align correctly later. Secure to chassis and side panels as per other panels.



1.23 Next fit the roof panel, making sure the ID plate is at the door end. You may need additional helpers at this point. Firstly close and lock the door, and assuming site conditions allow, lift the roof onto the door panel and slide up. Once the roof panel is in the correct place it will slot over all four walls. Please keep fingers clear at this point as it can lock down unexpectedly. If necessary the panel can be slid up from the side but due to steeper angles this requires more effort.

1.25 Using your stepladder, access the top of the roof to screw in the 4x lifting eyes.



1.24 Now fit the 4x M8 bolts and two washers to secure the roof to the respective wall panels.



4 Shelving System

ASSEMBLY INSTRUCTIONS

For any 2m, 3m, 4m Flat Pack store

Overview

The Portable Space shelving system is extremely quick and easy to erect. It is made up of a minimum of two shelf uprights that slot quickly and easily into the wall of the flat pack container using no fixings. The shelf arms (also no fixings required) have a 15kg load capacity each. The shelf upright itself has a capacity of 30kgs, this means a maximum of two shelf arms can be used on each shelf upright. Therefore when using two shelf uprights each shelf has a load capacity of 30kg, with each additional shelf upright and shelf arm the load capacity increases by 15kg up to a maximum of 60kgs per shelf for both the 1370mm and 1850mm shelf sizes.

The exact contents of your kit will depend on which shelf configuration and option you have chosen but the assembly method will be the same. Before starting make sure that the flat pack container has been correctly assembled and all bolts have been used as indicated in the instruction manual.

First of all unwrap all items and lay them out so that you can plan where each shelf will be located and the height that you need to use the shelves.



Scan here for shelving system assembly instructions video



4.1 Insert the top of the shelf upright into the top rail of the flat pack container, these should be positioned so that the shelf will be stable and secure when loaded. Not too close to the end and wide enough apart that the shelf will be balanced. Make sure that the shelf upright is now located behind the bottom rail of the container.



4.2 See above to show which end is the top.



4.3 Twist the shelf arm at around 45 degrees to enable it to slot into the shelf upright. Now twist the shelf arm, sometimes a small tap is required to locate the shelf arm into the final position. If you need to remove or reposition the shelf arm at anytime, twist the shelf arm in the opposite position and lift upwards.



4.4 Final position of shelf arm, when correctly fitted.



4.6 Finally you can now position the shelf onto the shelf arms (minimum of two).



4.5 Now repeat the process for all other shelf uprights and shelf arms.



4.7 Before adding any weight check that the shelf is sitting level and is secure.