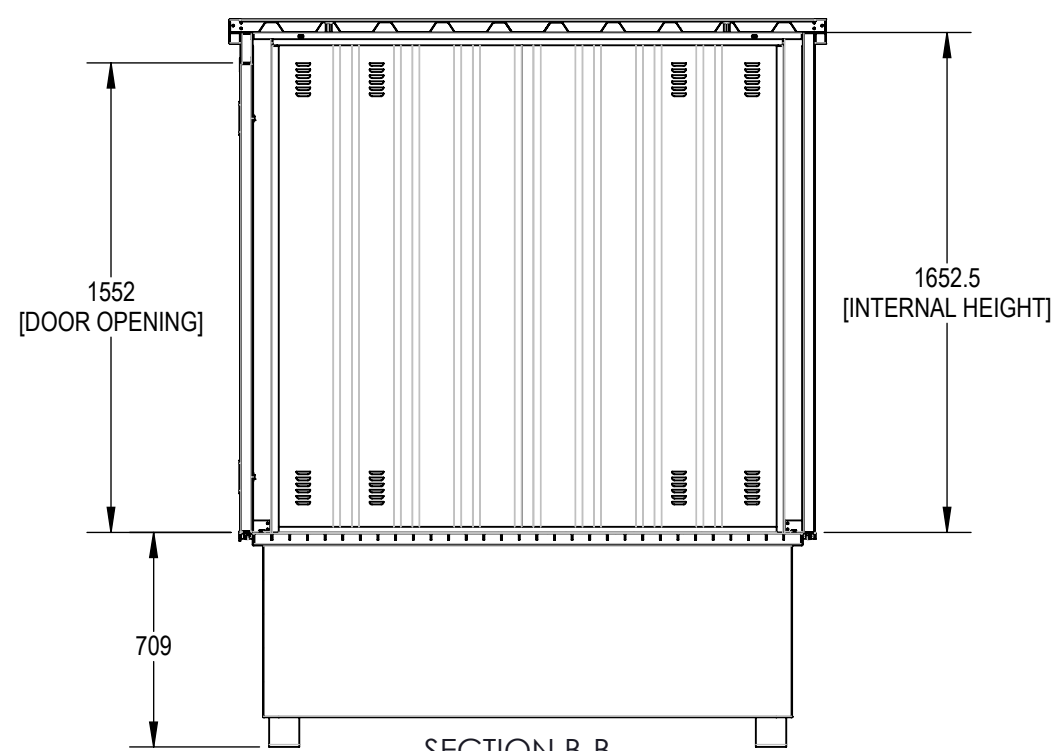
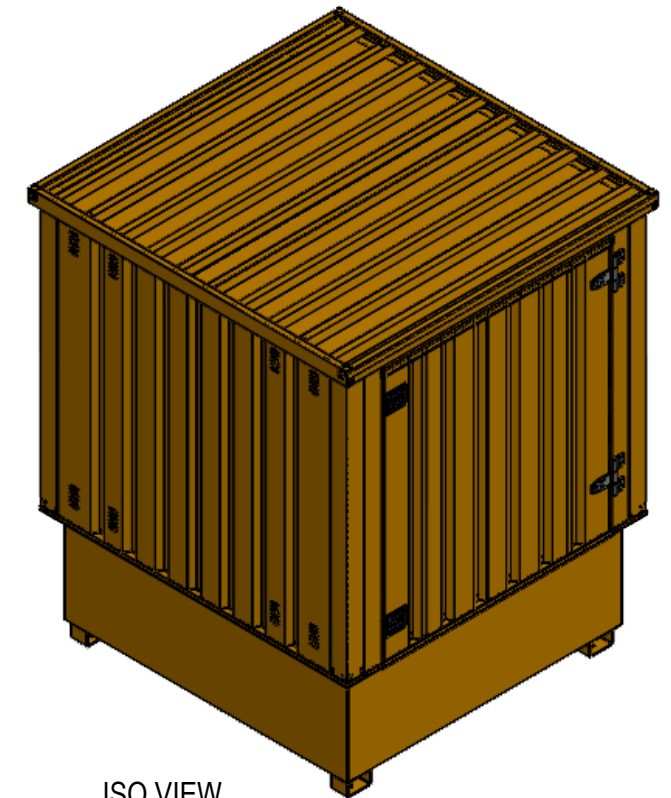
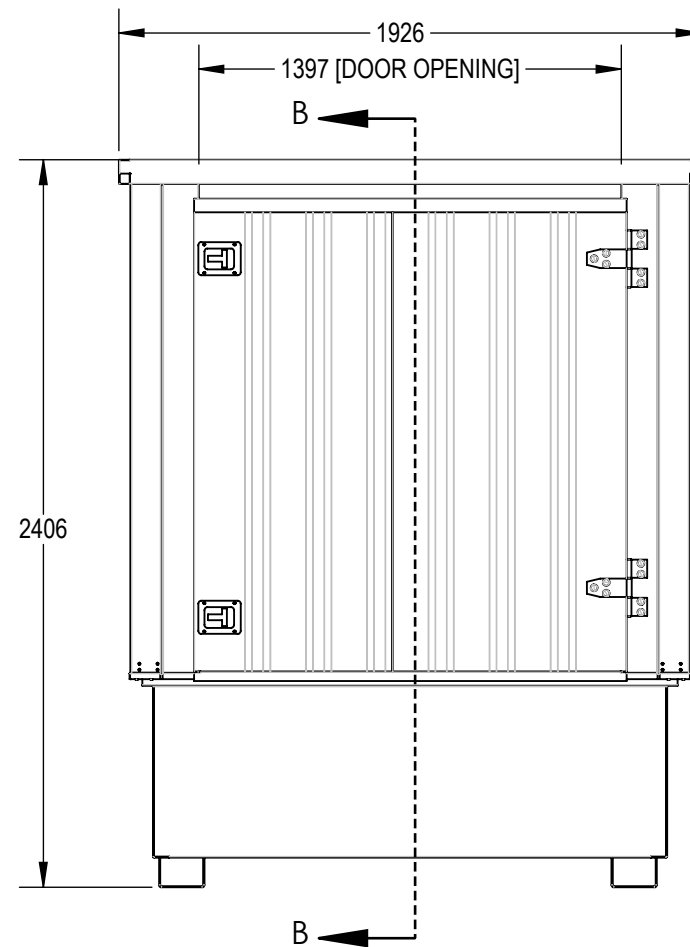
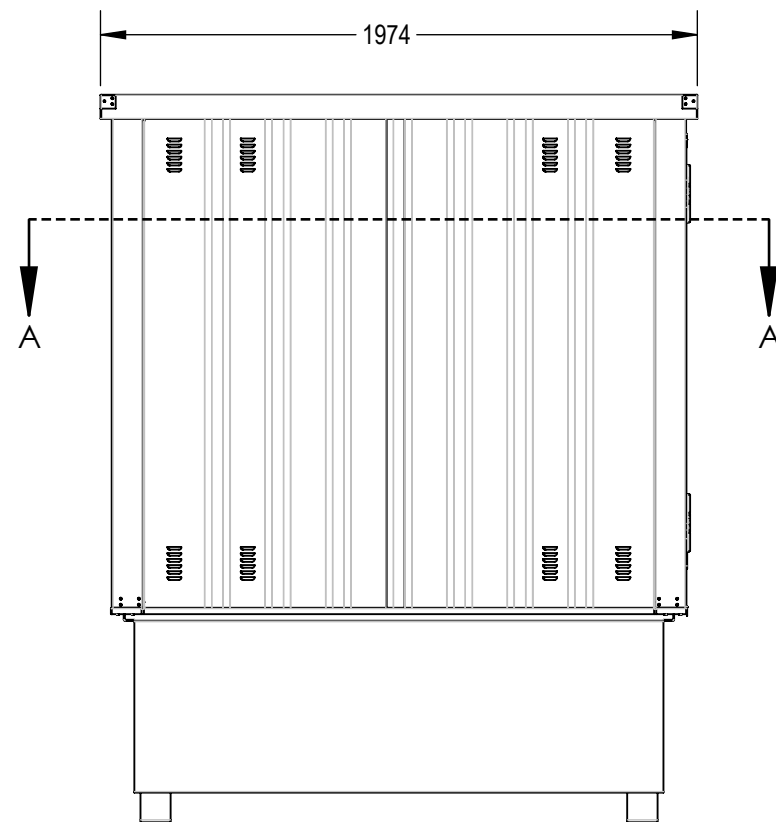


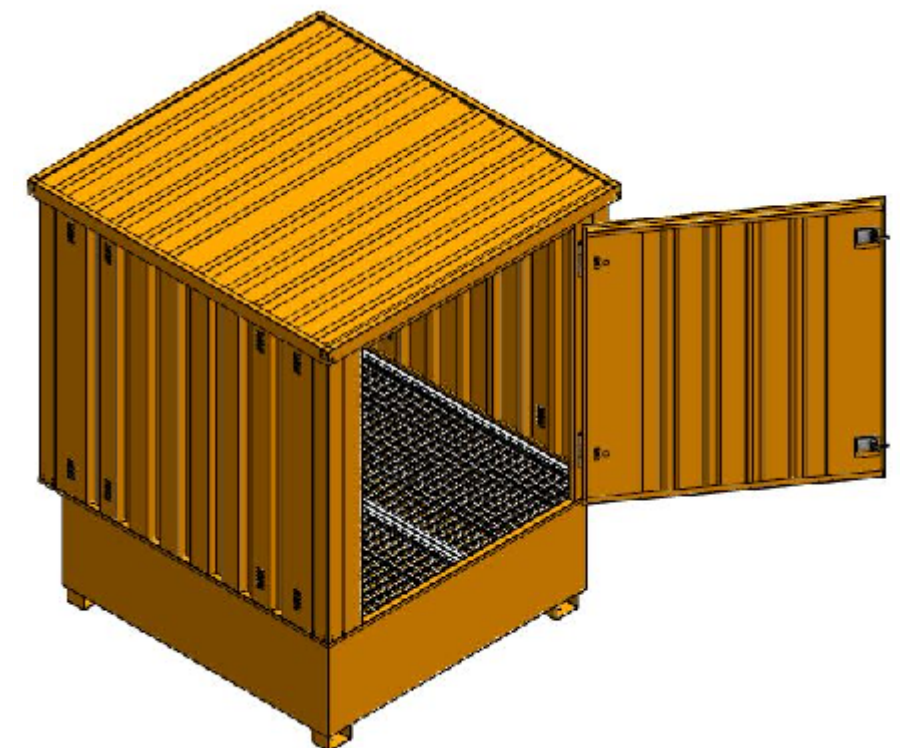
SECTION A-A



SECTION B-B



ISO VIEW
[SCALE 1:33]



BUILD NOTES:

- POWDER COATED PANELS OVER GALANISED STEEL
- PAINTED EXTERNAL TO RAL1028 [MELON YELLOW]
- GALVANISED STEEL GRATED FLOOR ABOVE SUMP

portablespace[®]

cabin & container hire | sales | conversions | modular

Modular House, Bacton Business Park, Suffolk, IP14 4LE
TEL. 01449 782 123 www.portablespace.co.uk

Copyright in this drawing belongs to Portable Space Ltd. Neither the whole drawing nor any part thereof may be reproduced without the prior written permission of Portable Space Ltd.

DESCRIPTION:				QF NUMBER:	
SINGLE IBC STORE				QF-274	
CONTAINER/UNIT TYPE:				DRAWING NUMBER:	Rev:
FLATPACK				10-10274	0
		NAME	DATE	UNLESS OTHERWISE SPECIFIED, DIMENSIONS ARE IN MILLIMETERS TOLERANCES (UNLESS OTHERWISE SPECIFIED): LINEAR = 0 +/- 1.5mm 0.0 +/- 0.5mm 0.00 +/- 0.25mm ANGULAR = 1deg	
DRAWN BY		J.M.	04/07/2024	WEIGHT: 446kg	
CHECKED		M.D.	04/07/2024	SCALE:1:25	[DO NOT SCALE DRAWING]
				A3	SHEET 1 OF 1