

portablespace®

cabin & container hire | sales | conversions | modular

Cabin and container delivery and installation

At Portable Space, our in-house Transport team is highly experienced in delivering and installing our comprehensive range of cabins and containers UK-wide. Operating our own fleet of vehicles means we can maintain a consistently high level of customer service.



We want your delivery and installation to run as smoothly as possible and that's why it's essential we have as much information beforehand so we can use the right vehicle for the job and have details of any additional challenges or site constraints. This will avoid failed delivery attempts and you incurring unforeseen costs.

Please complete and return our questionnaire and contact our team if you are concerned about any aspect of the delivery.

Assess your site

We will send a lorry capable of offloading whatever we are delivering to the site and at 90 degrees to the lorry (**see delivery information below**). By using the right vehicle for the job, we can deal with many different challenging situations provided we know in advance.

On delivery day

Our team is trained to carry out all necessary assessments for safe delivery/installation using standard generic risk assessment for unloading and loading by lorry-mounted crane. Please see our Health & Safety section for further information. Upon completion of your delivery, please check the levels are satisfactory and confirm acceptance with the driver before they leave site. Any return trips to alter the level of the unit(s) may incur additional costs.

Our drivers will report to your point of contact to agree a lifting plan before starting work and will level the cabin/container as required with 15m tick timber packers (we need advance notice if levelling exceeds 150mm). We will ensure that all doors and apertures open correctly before leaving site.

Specialist support

For more complex installations which may involve multiple cabins, we can draw on additional specialist in-house support. Our Appointed Person (AP) will attend site and produce specific lift plans together with statement and risk assessment covering the delivery/installation. This service has a lead-time and is chargeable.

For linked buildings and modular building installations and removals, our team will assist with the erection of gantries, complex staircases and fitting 'between cabin' links correctly, safely and efficiently.

Lead-time

Lead times are dependent on the product you are ordering and the delivery location, we can advise you on the current delivery lead time at the time of order. Purchased flat packed products are delivered in a run rather than individually, so your delivery would be booked onto the next available run. If an exact delivery date is crucial please give as much notice as possible, especially if you need a Monday or Tuesday which are popular delivery days.

Cost-effective options

For our compact and stackable flat pack cabins and small single and double toilets, we can make up combined loads for cost-effective UK delivery. Our regular 'milk-round routes' include North Wales, North and West England and Scotland, South Wales and the South West through to Cornwall.



Delivery information

Please read the following carefully and if your location needs anything different, it's essential that you talk to us in advance so that we can send the most appropriate vehicle for the job.

- Our lorries are capable of delivering your cabin or container to the side and at 90 degrees to the lorry, just clear of the stabiliser leg
- Our fleet includes larger cranes for challenging situations, including offloading in front of the cab (please request a quote if this service is required)
- Consider the size of the lorry in terms of the delivery location including height restrictions, overhead obstructions, space for turning corners and entering gates
- Portable Space is not responsible for any damage to manhole or drain covers or surfaces (such as pavements, fields or grass) during delivery
- In the event of our vehicle getting stuck, you will be liable for the cost of recovery and any damage that results, as well as any parking or permit costs incurred.

Fig 1. Rigid

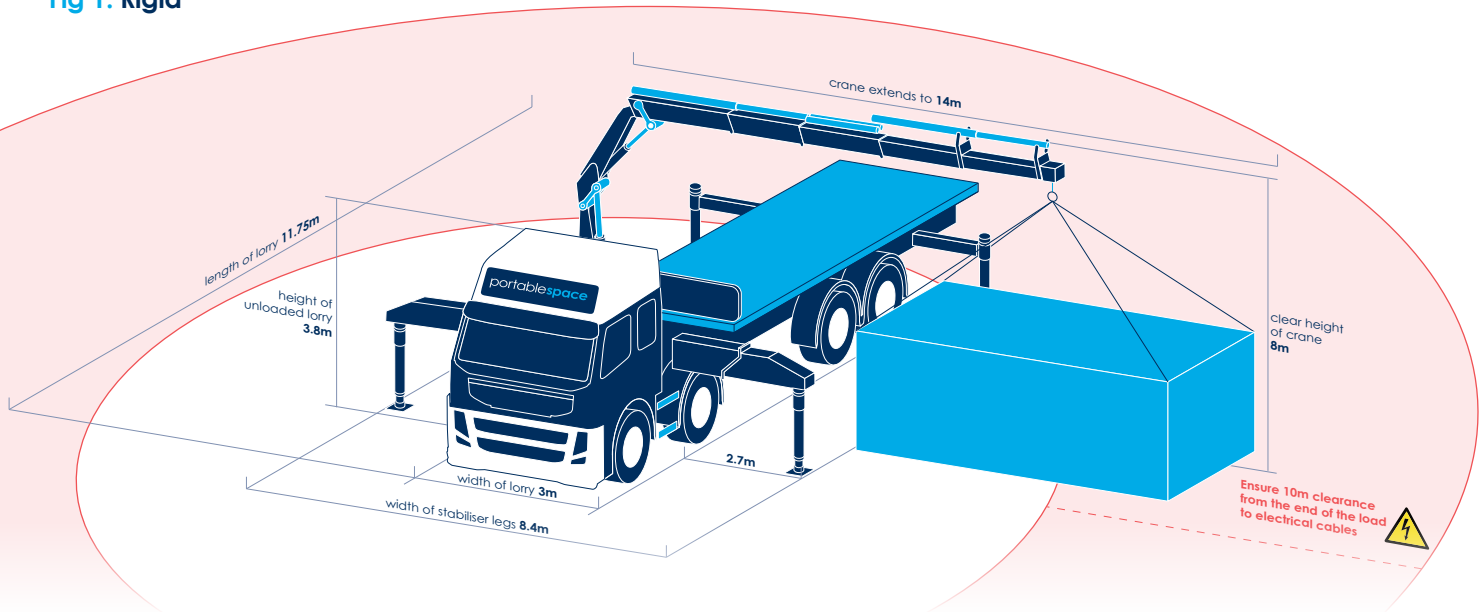


Fig 2. Rigid with trailer

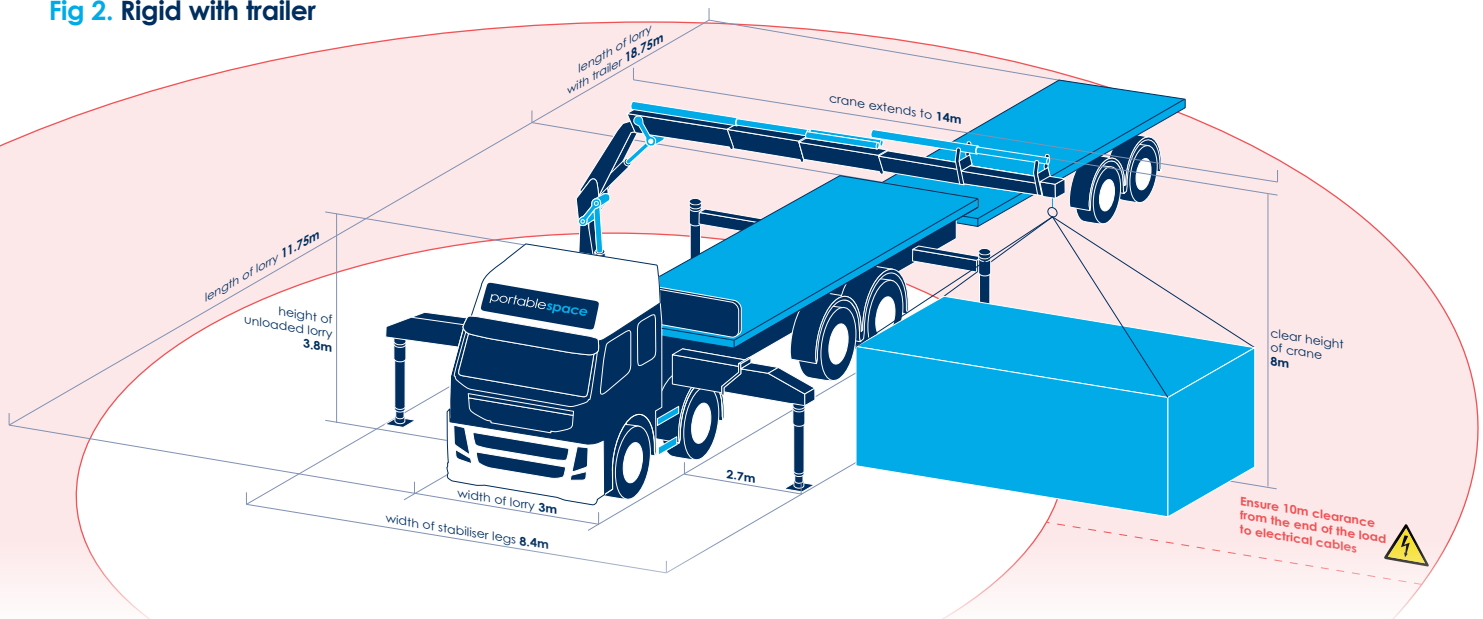
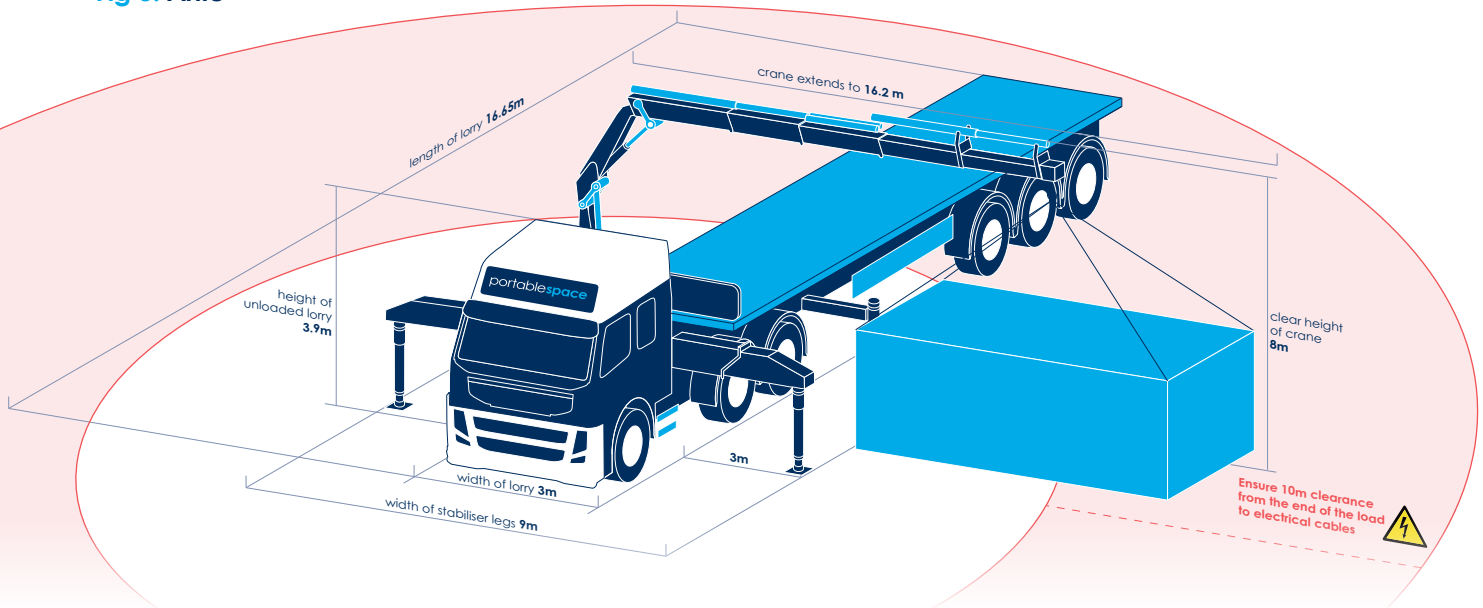


Fig 3. Artic



Delivery and collection questionnaire

We want to ensure everything runs smoothly on the day of delivery and that's why it is important you complete the questionnaire below and return it to us so we have as much information as possible in advance. If you have any concerns please call us on [01449 782123](tel:01449782123). If you do not return this questionnaire, we will assume your site is suitable and unfortunately you will be liable for any failed delivery charges.

Does your site, intended location and route leading up to site have suitable and sufficient access to accommodate a HIAB vehicle? (e.g. gates, bridges, width of roads/driveways, confined/constricted access) Please refer to the HIAB drawing (Fig. 1) showing dimensions L 11.75m x H 3.8m x W 3m excluding weighted legs. If you have any concerns speak to the office and/or provide photos.

Please tell us your site opening and closing times and if you have any restrictions or preferences.

Please confirm if you have any specific site requirements. (e.g. RAMS, Lifting Plans, accreditations) Any specific restrictions/requirements must be given to us with a minimum of 25 working days' notice. Site specific RAMS are chargeable from £380 + VAT.

Are there any overhanging obstructions on site? (e.g. electrical/telephone cables, trees, or branches)

Does your site, intended location and route/approach leading up to site have a hardstanding surface? (e.g. concrete, tarmac) If your delivery is over a softcore surface (e.g., over grass) please contact us for advice.

Is the delivery/lift/collection within 20 metres of railway lines, tram lines, metro lines or subway lines?

Is your site suitable to take a vehicle with a trailer or two HIAB vehicles next to one another? We may sometimes deliver multiple orders on one vehicle so a trailer might be added or, if the site is suitable, we may send more than one vehicle.

Any specific notes or comments you would like to add?