

ASSEMBLY INSTRUCTIONS FLATPACK STORE



Assembly instructions for 2m, 3m, 4m and 6m stores

TOOLS & COMPONENTS



INSTALL PARTS

All of the hardware parts needed for assembling your flatpack are included in the parts box alongside your flatpack.

These include:

- M12 Washers
- M10 Nuts
- M10 x 20mm Bolts
- M5 x 15mm Screws
- 2 x C Type Door Handles

REQUIRED TOOLS

Flatpack units are designed for easy assembly, you will only need the following tools:

These include:

- PZ2 Screwdriver
- 16mm Socket set
- Spirit Level
- Minimum 5-tread stepladder
- Work Gloves

PANELS & WEIGHTS

Portable Space flatpack stores are comprised of 6 panels that are light enough to be lifted by hand. The 6m store base and roof panels are easier to move with a forklift using the forklift pockets and lifting eyes but can be lifted by a large team of strong people if required.

2M FLATPACK STORE	3M FLATPACK STORE	4M FLATPACK STORE	6M FLATPACK STORE
Flatpacked 351kg	Flatpacked 452kg	Flatpacked 542kg	Flatpacked 835kg
Rear Panel 38kg x1	Rear Panel 38kg x1	Rear Panel 38kg x1	Rear Panel 38kg x1
Side Panel 45kg x2	Side Panel 60kg x2	Side Panel 78kg x2	Side Panel 146kg x2
Door Panel 60kg x1	Door Panel 60kg x1	Door Panel 60kg x1	Door Panel 60kg x1
Roof Panel 54kg x1	Roof Panel 76kg x1	Roof Panel 96kg x1	Roof Panel 145kg x1
Base Panel 109kg x1	Base Panel 158kg x1	Base Panel 192kg x1	Base Panel 300kg x1

LEVEL BASE

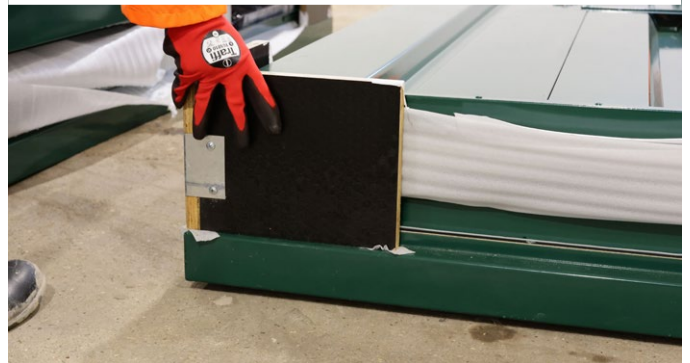
It is important that your flatpack is assembled on a level surface. An uneven base can cause difficulties during assembly and may lead to the doors becoming misaligned, affecting how they open, close, and lock.

A concrete base offers the most stable and durable solution. Our Eco foundation pads or paving slabs provide simple and effective alternatives. For small height adjustments plywood packing can be used to achieve a level base. If unsure, please contact our team who can help discuss options and find the best solution for you.

FLATPACK ASSEMBLY - 1. UNPACKING



1.1 The store arrives in flat pack form. If delivered by HIAB lorry, request offload as close to the build area as possible.



1.4 Lift off the top roof panel, remove the corner supports and unpack all components. Lay all the panels out neatly for easy access.



1.2 Unscrew the 4 lifting eyes and put to one side for reattaching later.



1.3 Unbolt the 4 metal retaining plates (using a 16mm socket). These parts are not used for assembly, but you may want to keep for future repackaging if you plan to move the unit in the future.

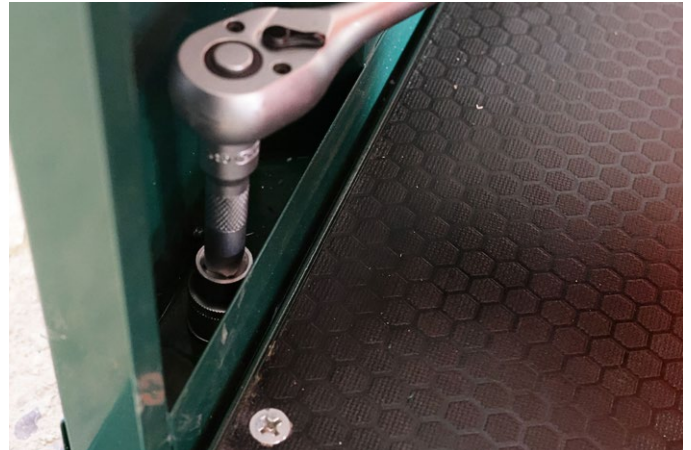


1.5 If you need to relocate the base, do so at this stage. Before beginning assembly, use a spirit level to ensure the base is completely level. Eco Foundation Pads, or equivalent, can be used to make any adjustments.

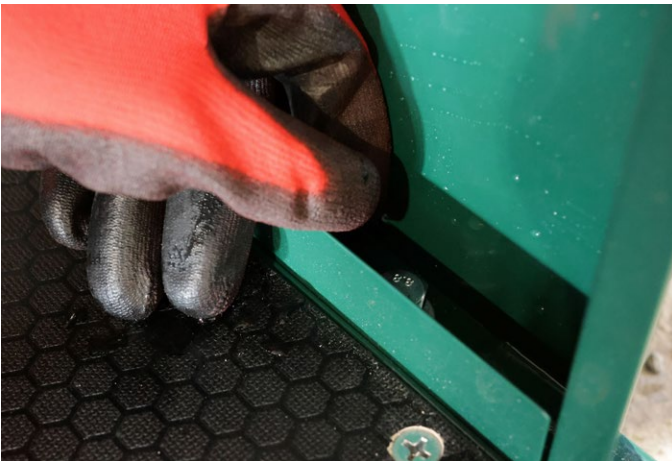
FLATPACK ASSEMBLY - 2. WALL & DOOR PANEL ASSEMBLY



2.1 Lift either side wall panel (if the site is restricted we recommend you start with the side wall nearest any obstruction) to the side of the base.



2.4 Now fix the rear panel to the base using 4x M10 bolts and washers.



2.2 Once positioned, fit 4x M10 bolts and washers to secure the panel to the base. Have someone support this panel until the next panel is in place and secured (do not assemble in windy conditions).



2.5 Repeat the process for the other side wall panel, making sure the unit is securely bolted to both the rear panel and base.



2.3 Now fit the rear panel, aligning the tongue on the side panel with the groove joint on the rear panel. Fix the rear panel to the side panel using an M10 bolt with washer each side.



2.6 Now fit the door panel. Rest on the bottom of the base rail at 45 degrees and raise up, aligning the tongue and groove joints as you lift. Secure to base and side panels as per other panels.

TIP Lock the doors or have someone hold them closed to ensure safe handling and prevent them from swinging open during assembly.

FLATPACK ASSEMBLY - 3. ROOF ASSEMBLY

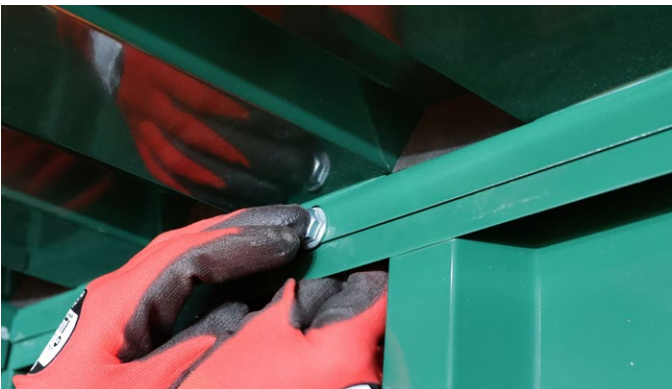


3.1 Next fit the roof panel, making sure the ID plate is at the door end. You may need additional helpers at this point. Lift the roof onto the door panel.



3.2 Once the roof panel is in the correct place slide it along until it slots over all four walls. Please keep fingers clear at this point as it can lock down unexpectedly.

TIP If necessary, the panel can be slid up from the side but due to steeper angles this requires more effort.



3.3 Now fit the 4x M10 bolts and washers to secure the roof.



3.4 Use a stepladder to screw in the 4x lifting eyes to the roof.

4. FINAL FITTINGS



4.1 Fit the handles onto the inside and outside of the door using the screws provided.



portablespace[®]

cabin & container hire | sales | conversions | modular

Portable Space Ltd,
Modular House, Bacton Business Park,
Stowmarket, Suffolk, IP14 4LE

T:+44(0) 01449 782123
info@portablespace.co.uk
www.portablespace.co.uk

