

**CONSTRUCTION NOTES**

**EXTERNAL WALL CONSTRUCTION:**

- 1.6mm PROFILED STEEL WALL PANELS PAINTED WITH ONE COAT COLOUR RAL5013 "DARK COBALT BLUE"

**INTERNAL WALL AND CEILING FACING:**

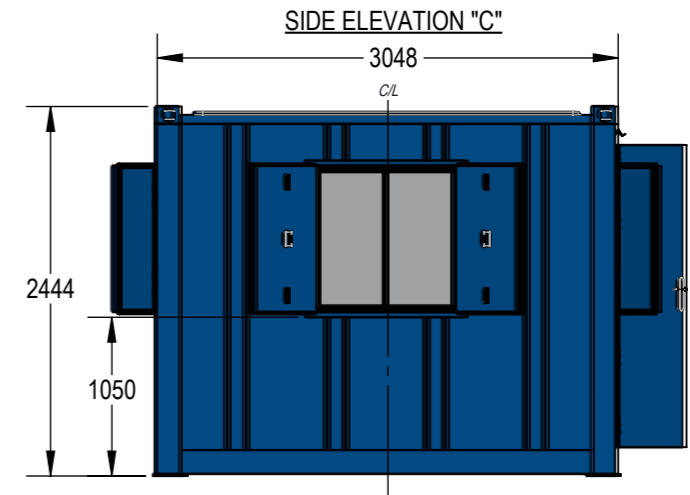
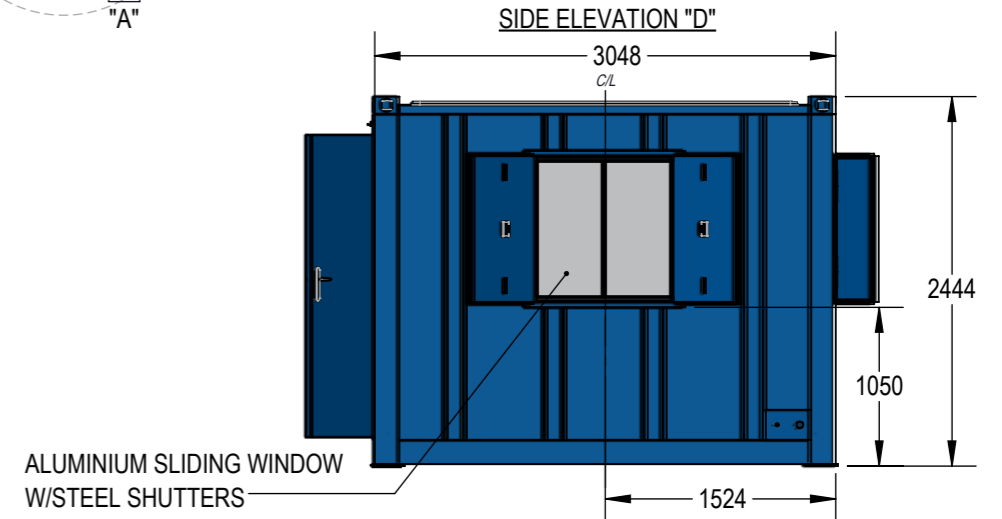
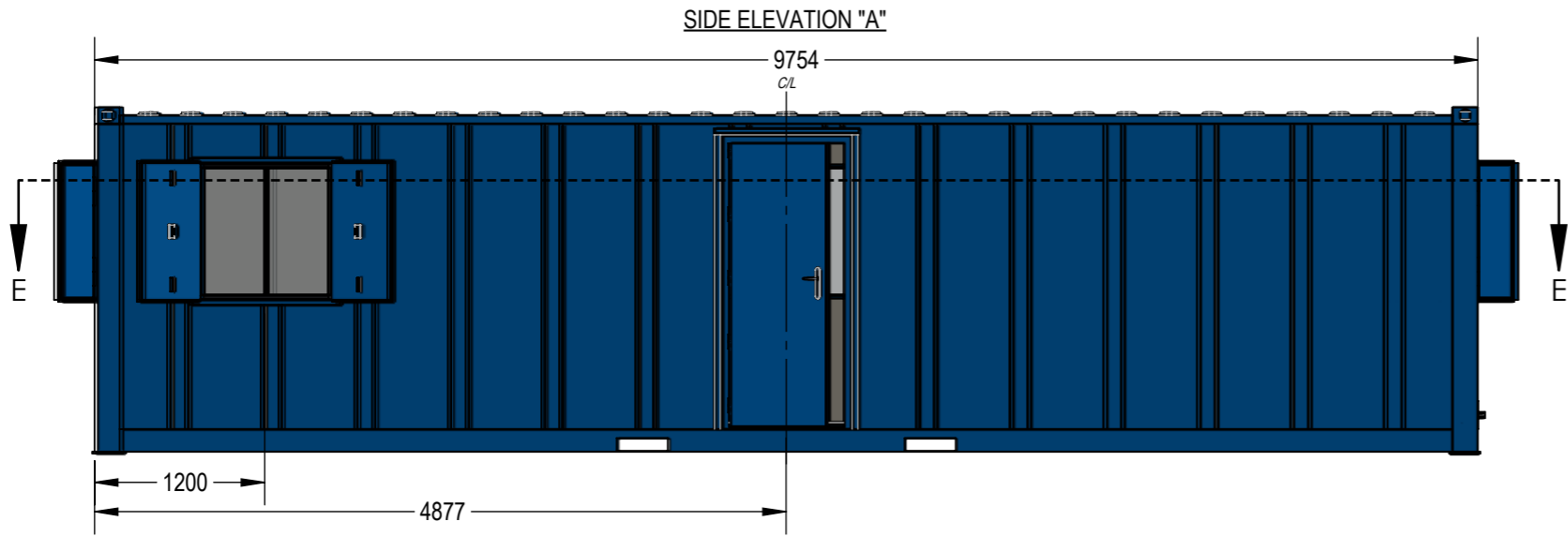
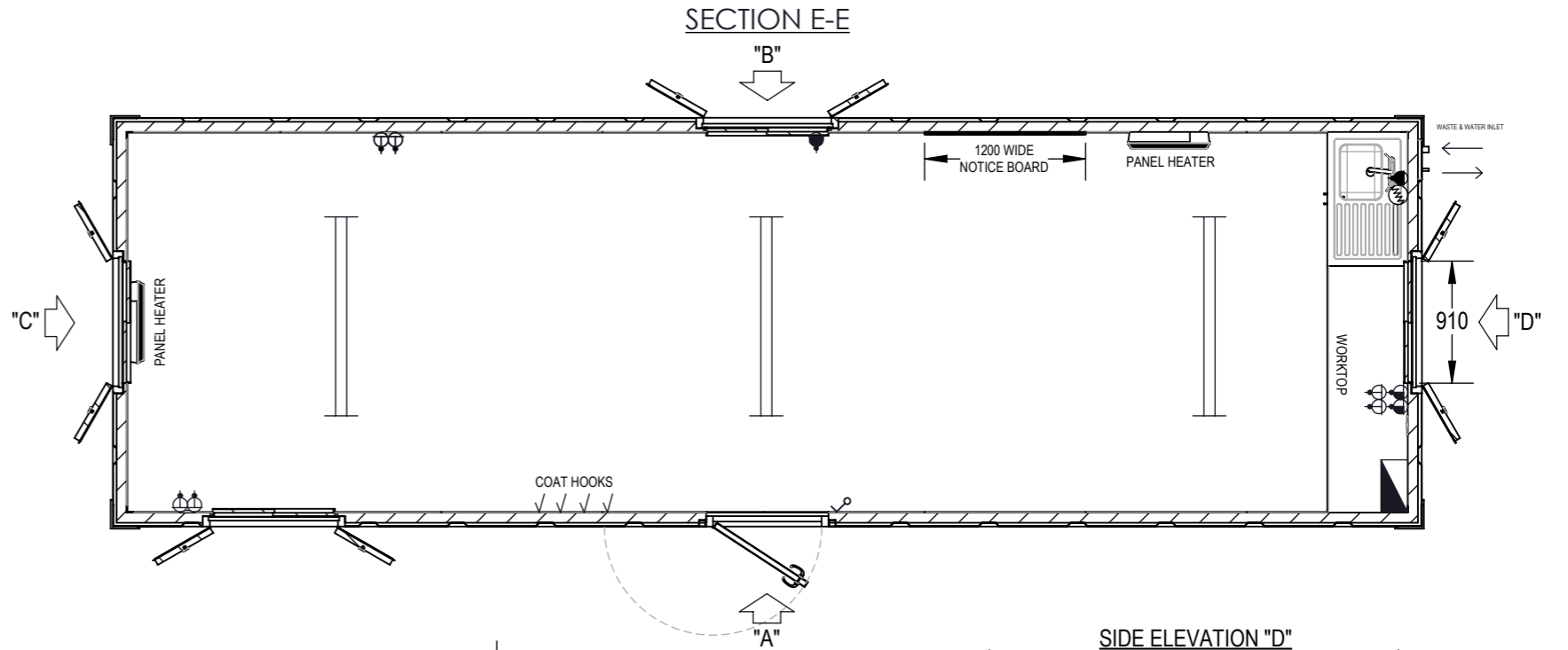
- WHITE VINYL FACED PLASTERBOARD.

**FLOOR CONSTRUCTION:**

- 18mm OSB3 BOARD WITH 2mm NON-SLIP VINYL - POLYFLOR STANDARD XL - GRAPHITE 9120

**INSULATION:**

- CEILING: 100mm - 0.040 W/MK INSULATION.
- WALLS: 60mm - 0.040 W/MK INSULATION
- FLOOR: NONE



|  |                                  |  |                    |
|--|----------------------------------|--|--------------------|
|  | Distribution Board/Consumer Unit |  | Wall Light Switch  |
|  | Panel Heater                     |  | Thermostat         |
|  | Tubular Panel Heater             |  | Extraction Fan     |
|  | High Level Fan Heater            |  | Smoke Sensor       |
|  | Water Heater - Under/Over Sink   |  | Heat Sensor        |
|  | Waterproof LED Strip Light       |  | Frost Stat         |
|  | Bulkhead Ceiling Light           |  | RJ45 Data Point    |
|  | 13A Socket-Above Counter         |  | 12mm Earthing Stud |
|  | 13A Socket - Below Counter       |  | Fused Spur         |

**portablespace**<sup>®</sup>  
cabin & container hire | sales | conversions | modular

Modular House, Bacton Business Park, Suffolk, IP14 4LE  
TEL. 01449 782 123 www.portablespace.co.uk

Copyright in this drawing belongs to Portable Space Ltd. Neither the whole drawing nor any part thereof may be reproduced without the prior written permission of Portable Space Ltd.

|  |                            |   |   |
|--|----------------------------|---|---|
| DESCRIPTION:<br><b>ANTI-VANDAL CANTEEN</b>             |                            | QF NUMBER:<br><b>QF-670</b>   |   |
| CONTAINER/UNIT TYPE:<br><b>32' X 10' STEEL AV UNIT</b> |                            | DRAWING NUMBER:<br><b>10-10670</b>  | Rev:<br><b>A</b>                              |
| DRAWN BY:<br><b>J.M.</b>                               | DATE:<br><b>19/03/2026</b> | UNLESS OTHERWISE SPECIFIED, DIMENSIONS ARE IN MILLIMETERS<br>TOLERANCES (UNLESS OTHERWISE SPECIFIED):<br>LINEAR = 0 +/- 1.5mm 0.0 +/- 0.5mm 0.00 +/- 0.25mm<br>ANGULAR = 1deg |   |
| CHECKED:<br><b>M.D.</b>                                | DATE:<br><b>20/03/2026</b> | SCALE:1:50  | [DO NOT SCALE DRAWING] <b>A3</b> SHEET 1 OF 1 |
| WEIGHT:<br><b>TBC</b>                                  |                            |   |   |