

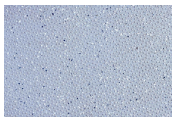
12FT X 9FT 2+1 JACKLEG TOILET

Quickfind Code: 596

Part Number: SALE 2+1 TOILET TIMBER

£8,800.00 (exc. VAT)

£10,560.00 (inc. VAT)



PRODUCT DETAILS

This jackleg toilet is available for sale and delivery UK-wide.

The 2+1 jackleg toilet provides two male cubicles together with urinals and a single female toilet accessed from a separate external door. Built from the jackleg range the unit simply needs connection to electricity, water and waste. Therefore it is ideal for the provision of toilet facilities for short and medium term projects.

The benefit of a portable toilet over conventional build is that the unit can be easily moved, sold or replaced with larger facilities as your business grows and changes. Some sites need different proportions of female to male facilities. We also build bespoke units and can incorporate other facilities such as showers if required.

TYPICAL USES

- Factories
- Construction projects
- Transport businesses
- Sports clubs and schools

BENEFITS

- Low maintenance Plastisol clad finish
- Easily moved if your plans change
- Choice of cladding colours

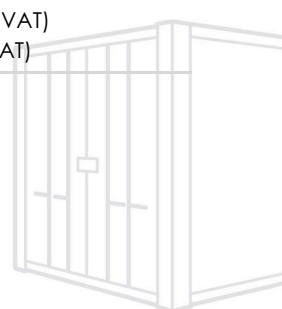
PRODUCT OPTIONS:

The following optional items can be added to this product:

32 Amp Socket Fitted



£78.00 (exc. VAT)
£93.60 (inc. VAT)



PRODUCT SPECIFICATIONS

External Length (m)	3.66
External Width excluding Jacks (m)	2.74
External Width including Jacks (m)	2.87
External Height (m)	2.75
Internal Length (m)	3.46
Internal Width (m)	2.45
Internal Height (m)	2.33
Door Width (m)	0.91
Door Height (m)	2.07
Floor Type	18mm Particle Board
Internal Floor Covering	2mm Vinyl
Internal Wall Covering	Vinyl Faced Plasterboard
Electrical Requirements. (Amps)	32amp