



4M FLAT PACK STORAGE CONTAINER – GALVALUME

Quickfind Code: 1506

Part Number: S-FPS-4MDD-GALVLM

£1,610.00 (exc. VAT)

£1,932.00 (inc. VAT)

PRODUCT DETAILS

4M FLAT PACK STORE BENEFITS

- **FLAT PACKED:** Comprising person-portable panels, these containers are ideal for locations with narrow passageways, low ceilings and locations where a delivery vehicle cannot reach.
- **GALVALUME:** Fully galvalume steel container – superior corrosion resistance and longer life span compared to galvanised steel.
- **SIMPLE BUILD:** No need for cranes, forklifts or specialist tools – just a socket set and you're away! (installation service available – see product options below)
- **TWO LOCKS:** Heavy duty, galvalume steel body with double locking system. Add a locking bar for even more protection.
- **LINKABLE:** Using flatpack linking kits, same size units can be linked either side-by-side or end-on-end to create a larger internal space for storage

PRODUCT DESCRIPTION

This 4m Flatpack Storage Container is a large fully galvalume steel store with double doors and an anti-slip plywood floor.

Upgraded superior galvalume steel gives the container a metallic silver-grey finish.

The double doors on this flatpack make it ideal for use at home, work, school or construction site, to protect tools, materials, sports equipment, garden equipment, outdoor furniture and personal belongings from theft and the weather.

Each part of the container can be moved with a few strong people.

This flat pack store is available for sale in the UK. Delivery available to mainland UK locations on a shared lorry load with crane offloading.

FLAT PACK STORE ASSEMBLY VIDEO

PRODUCT SPECIFICATIONS

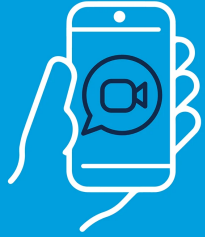
External Length (m)	3.88
External Base Width (m)	2.19
External Roof Width (m)	2.28
External Height (m)	2.20
Internal Length (m)	3.73
Internal Width (m)	2.11
Internal Height (m)	2.07
Door Width (m)	1.75
Door Height (m)	2.00
Weight (Flatpacked) (kg)	542
Weight Heaviest Part (when Demounted) (kg)	192
Floor Type	Phenolic Resin Anti-slip Plywood 18mm
Steel Gauge (mm)	0.8



Visit our HQ

Book a guided tour of our Suffolk site and see our products first-hand

[BOOK NOW](#)



See it live with a video call

Why not schedule a live walkthrough with a member of our team?

[BOOK NOW](#)

PRODUCT OPTIONS:

The following optional items can be added to this product:

Flat Pack Professional Installation Service (C)	£950.00 (exc. VAT)
	£1,140.00 (inc. VAT)
