



## 6M FLAT PACK STORAGE CONTAINER – POWDER COATED RAL6005

Quickfind Code: 265

Part Number: S-FPS-6MDD-6005

**£2,600.00** (exc. VAT)

**£3,120.00** (inc. VAT)

### PRODUCT DETAILS

#### 6M FLAT PACK STORE BENEFITS – POWDER COATED

- **FLAT PACKED:** Comprising person-portable panels, these containers are ideal for locations with narrow passageways, low ceilings and locations where a delivery vehicle cannot reach.
- **POWDER COATED FINISH:** A durable powder coated finish for improved resistance to rust, weathering, and wear.
- **SIMPLE BUILD:** No need for cranes, forklifts or specialist tools – just a socket set and you're away! (installation service available – see product options below)
- **TWO LOCKS:** Heavy duty, metal container with double locking system. Add a locking bar over the doors for even more security.
- **LINKABLE:** Using flatpack linking kits, same size units can be linked either side-by-side or end-on-end to create a larger internal space for storage.

### PRODUCT DESCRIPTION

This 6m Flatpack Storage Container is an extra large steel store with double doors.

Designed to provide a similar storage capacity as a **20ft shipping container** but with the added benefits and flexibility of our flat pack container range.

Finished with a thick, durable powder-coated layer in RAL6005 (Moss Green) to prevent rusting and provide long-lasting protection.

The double doors on this flatpack make it ideal for use at home, work, school or construction sites, to protect tools, materials, sports equipment, garden equipment, outdoor furniture and personal belongings from theft and the weather.

Each part of the container can be moved with a few strong people. However, we recommend a team of 6-8 strong people to lift and position the roof on this 6m store. If you have access to a forklift, you can use the lifting eyes and forklift pockets on the flatpack to assemble or move the unit more easily.

This flat pack store is available for sale in the UK. Delivery available to mainland UK locations with crane offloading (for island locations such

### PRODUCT SPECIFICATIONS

External Roof Length (m)	5.88
External Base Length (m)	5.80
External Base Width (m)	2.19
External Width (m)	2.29
External Height (m)	2.24
Internal Length (m)	5.73
Internal Width (m)	2.14
Internal Height (m)	2.10
Door Width (m)	1.75
Floor Type	OSB Board
Weight (Flatpacked) (kg)	835
Weight Heaviest Part (when Demounted) (kg)	300
Steel Gauge (mm)	0.72

as the Isle of Wight, Isle of Man and the Channel Islands, we can deliver to the nearest mainland port).

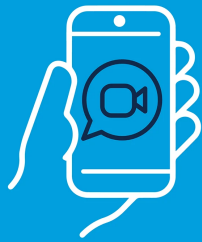
We also offer a [6m galvalume storage container](#).



## Visit our HQ

Book a guided tour of our Suffolk site and see our products first-hand

[BOOK NOW](#)



## See it live with a video call

Why not schedule a live walkthrough with a member of our team?

[BOOK NOW](#)

**PRODUCT OPTIONS:**

The following optional items can be added to this product:

---

Flat Pack Professional Installation Service (D)	<b>£1,150.00</b> (exc. VAT)
	<b>£1,380.00</b> (inc. VAT)

---