



## FLAT PACK MULTI-COMPARTMENT STORAGE CONTAINER

Quickfind Code: 273

Part Number: SALE MULTI COMPARTMENT FLATPACK STORE (RAL7015)

**£4,448.00** (exc. VAT)

**£5,337.60** (inc. VAT)

### PRODUCT DETAILS

This 6m multi-compartment flat pack storage unit offers the ultimate solution for flexible space management. Four individual doors and a removable internal wall system offers customised compartmentalisation to suit your specific needs.

By removing the internal wall panels, you can create one, two, three or four compartments to suit your storage requirements. The unit remains durable and secure as each internal panel is secured from both sides.

The T-lock door handle is compatible with combination padlocks.

This multi-compartment unit is quick and easy to assemble. The storage unit is delivered flat-packed with all fixings required for assembly. It is light enough to be man handled and the components are small enough to fit through small passageways. We do recommend a small team of people for placing the roof section into position.

The storage unit can be placed on any level and firm ground. If any levelling is needed, then consider purchasing our optional [eco foundation pads](#).

### IDEAL FOR THE GARDEN

The flexibility of the unit means it is also a great alternative to traditional garden storage. Store all your gardening equipment, tools, outdoor furniture and toys, sports equipment and bikes. Consider adding our [Flat Pack Ramp](#) for moving heavy items like lawnmowers.

### IDEAL FOR SPORTS CLUBS, SCHOOLS, COMMUNITY & SOCIAL CLUBS

The multiple compartments make it ideal for sports clubs, schools and social clubs allowing different groups or classes to each have their own secure storage space.

### IDEAL FOR SELF-STORAGE PROVIDERS

This flat pack storage unit is also popular with self-storage providers who want to maximise occupancy rates with flexible compartment sizes.

### PRODUCT SPECIFICATIONS

External Roof Length (m)	5.88
External Base Length (m)	5.80
External Width (m)	2.29
External Height (m)	2.24
Internal Length (m)	1.4 for each compartment in a four system setup
Internal Height (m)	2.10
Door Width (m)	1.18 / door
Door Height (m)	1.98
Max Weight Floor can Withstand (kg)	250kg/m2
Weight (Flatpacked) (kg)	1000
Weight Heaviest Part (when Demounted) (kg)	197
Floor Type	15mm OSB Board
Internal Wall Covering	Galvanised Steel
Steel Gauge (mm)	0.73

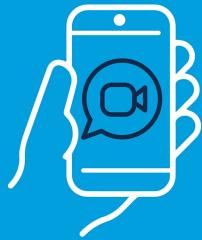
This flat packed multi-compartment storage container is available for sale and delivery throughout the UK. If you prefer not to assemble this unit yourself, please [contact us](#) to discuss our on-site installation service.



## Visit our HQ

Book a guided tour of our Suffolk site and see our products first-hand

[BOOK NOW](#)



## See it live with a video call

Why not schedule a live walkthrough with a member of our team?

[BOOK NOW](#)

**PRODUCT OPTIONS:**

The following optional items can be added to this product:

---

Flat Pack Professional Installation Service (E)	<b>£1,350.00</b> (exc. VAT)
	<b>£1,620.00</b> (inc. VAT)

---